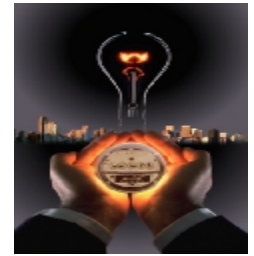




Final Program

Wednesday, November 19, 2008

7:30 a.m.	REGISTRATION - Continental Breakfast in the Vendor Exhibition Area - "Halton Hall"		
8:30 a.m.	OPENING REMARKS	Dave Wilkinson	Event Chair
	Welcome from the EDA	Bryan Boyce	EDA Chair
8:45 a.m.	SESSION 1: New Metering Technology Metering Applications for Medium Voltage Line Sensors	Joe Saunders	Burlington Hydro
9:30 a.m.	SESSION 2: Remote Disconnect Sleeves – Technology Review and Impact on LDC Operations and Customer Service	Neill Burdett John Teixeira	Guelph Hydro Electric Systems Inc.
10:15 a.m.	BREAK – Coffee available in the Vendor Exhibition Area - "Halton Hall"		
11:00 a.m.	SESSION 3: Field Conditions in Metering – Anticipate, then Expect	Scott Nash	Oshawa PUC Networks Inc.
11:45 a.m.	Lunch & Exhibition – Buffet lunch to be served in the "Holidome" with dessert and coffee to be served in the Vendor Exhibition Area "Halton Hall"		
1:30 p.m.	SESSION 4: How Power Quality Issues Affect Metering	William Hardy	Powermetrix
2:15 p.m.	SESSION 5: Power Quality – Preparing for New Standards and Regulatory Implications	Devinder Bahra Gary Macleod	Hydro One Networks Hydro Ottawa
3:00 p.m.	BREAK – Coffee available in the Vendor Exhibition Area - "Halton Hall"		
3:45 p.m.	SESSION 6: Overview of Measurement Canada's New Statistical Sampling Methodology	Mike Tarr	MB Tarr & Associates
4:15 p.m.	SESSION 7: LDC Only Session Review of Recent Metering-Related Product Concerns	Wilf Meston	Kitchener-Wilmot Hydro Inc.
5:00 p.m. - 8:00 p.m.	Mix & Mingle Social Evening & Vendor Contact - Hot hors d'oeuvres, cheese and crackers, etc. and Cash Bar in Vendor Exhibition Area - "Halton Hall"		



Final Program

Thursday, November 20, 2008

7:30 a.m.	Buffet Breakfast in the "Holidome" with coffee available in the Vendor Exhibition Area - "Halton Hall"		
8:30 a.m.	OPENING REMARKS	Dave Wilkinson	Event Chair
8:45 a.m.	SESSION 8: Communication Technologies – SMART Meters	Michael Martin	IBM Canada
9:30 a.m.	SESSION 9: Workforce Automation Update	Brent Murray	Horizon Utilities
10:15 a.m.	BREAK – Coffee available in the Vendor Exhibition Area - "Halton Hall"		
11:00 a.m.	SESSION 10: Impact of Full Deployment of SMART Meters on LDC Metering Staff	Paul Ferguson	Tay-Newmarket Hydro
11:45 a.m.	General Session Closing Remarks - Completion of Feedback Forms	Dave Wilkinson	Event Chair
12:00 p.m.	Lunch & Exhibition – Buffet lunch to be served in the "Holidome" with dessert and coffee to be served in the Vendor Exhibition Area - "Halton Hall"		

Afternoon Concurrent Sessions

1:30 p.m.	SESSION 11: Vendor Demonstration of Instrument Transformer Ratio, Resistance and Insulation Testing Equipment in the North end of the "Harvester Hall"	Reid Bongard Peter Hajek	Megger LaPrairie
1:30 p.m.	SESSION 12: Powermetrix Demonstrating Field Test Equipment in the Centre section of the "Harvester Hall"	William Hardy Mark Simpson	Powermetrix Brantford Power
1:30 p.m.	SESSION 13: Fluke Demonstrating Field Test Equipment. Fluke will also be offering a complimentary check of portable digital multimeter accuracy for attendees in the South end of the "Harvester Hall"	Ovi Robotin Eric Langford	Fluke Langford and Associates
2:15 p.m.	BREAK – Coffee available in the hallway adjacent to the presentation room - "Harvester Hall"		
2:30 p.m.	SESSION 11: Vendor Demonstration of Instrument Transformer Ratio, Resistance and Insulation Testing Equipment in the North end of the "Harvester Hall"	Reid Bongard Peter Hajek	Megger LaPrairie
2:30 p.m.	SESSION 12: Powermetrix Demonstrating Field Test Equipment in the Centre section of the "Harvester Hall"	William Hardy Mark Simpson	Powermetrix Brantford Power
2:30 p.m.	SESSION 13: Fluke Demonstrating Field Test Equipment. Fluke will also be offering a complimentary check of portable digital multimeter accuracy for attendees in the South end of the "Harvester Hall"	Ovi Robotin Eric Langford	Fluke Langford and Associates